

ELI Weekly

The Weekly Newsletter of the English Language Institute

Volume 101, Issue 5
September 26, 2006

St.Petersburg, Florida!



This Saturday, **September 30th**, you and your ELI friends have a chance to visit St. Petersburg (St. Pete, as Floridians call it), a popular vacation spot known for its beaches, art and history museums, great shopping, restaurants, and vibrant downtown.

St. Petersburg is located on Florida's west coast and is bordered by the Gulf of Mexico to the west and Tampa Bay to the east. It's about two and a half hours from Gainesville and is said to have the best beaches in the U.S.

If you're interested in joining in, you will need to purchase a **\$25 van ticket** from the **TriP office** by 3pm on Wednesday, September 27th.

There are 13 seats on the van, but only six remain! If you do want to go, please sign up as soon as possible. In addition to the van fee, you will need to bring spending money.



Notes from the Office

Travel Plans: If you are planning to travel during the winter break (December 16th – January 7th), we suggest you make your reservations now. You will not be able to leave earlier than December 15th. You may have trouble finding a ticket with the dates you need if you wait much longer. Flights fill up quickly for this time of year.

Inside this issue:

St. Petersburg | Winter Break Travel | Speaking to the Elderly | Pointing | Cars in the U.S.

Manners and Culture

Thanks for all the wonderful questions you've submitted. Please email any questions you have about culture and manners to our *ELI Weekly* editor, Jen Ramos, at jenmlej@hotmail.com, or put questions in her mailbox (marked **Ramos** in the ELI Main Office).

Q: Is it impolite to point at someone?

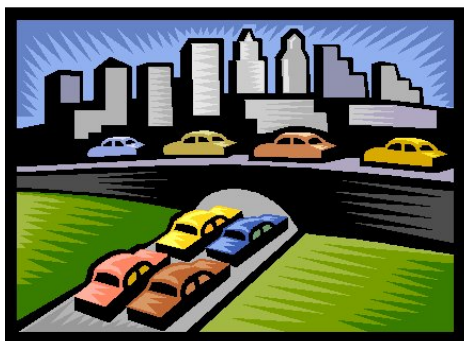
A: What a good question! It seems to depend on the other elements involved. For example, pointing and whispering = impolite. Pointing and laughing = impolite. Pointing and screaming = quite hostile. Pointing and exclaiming *You are the most intelligent person I know* = one fine compliment.

Q: Do I need to use special expressions of respect with elderly people?

A: In general in English, there aren't special terms or language constructions just for speaking to elders, but there are some things you can do: use *Yes, Ma'am* or *Yes, Sir* instead of simply yes or yeah. You could maybe add a little softness or sweetness to your tone of voice. Of course, it goes with out saying to keep your language clean, and opt for more formal phrases: *How do you do, Ma'am* vs. *Hey, what's up*.

Q: What is the most popular form of transportation in the U.S.?

What could be more American than the automobile! I think it's safe to say that outside major U.S. cities like New York, the car rules and is a necessary part of life for most people. Even some very large U.S. cities like Los Angeles and Miami are hard to get around in without a car. Some cities with good public transportation include: Boston, Chicago, San Francisco, and Washington D.C. And *still* their streets are jammed with traffic



Birthdays

Happy Birthday to:

Sept. 28th: Maher Aldukheil,
Kwangha Lee

Sept. 29th: Hee Kyung Yoon

Sept. 30th: Wendy Conley



English Language Institute
PO Box 117051
315 Norman Hall
Gainesville, FL 32611-7051, USA
Phone: (352) 392-2070
Fax: (352) 392-3744
Email: StudyEnglish@eli.ufl.edu
Webpage: www.eli.ufl.edu